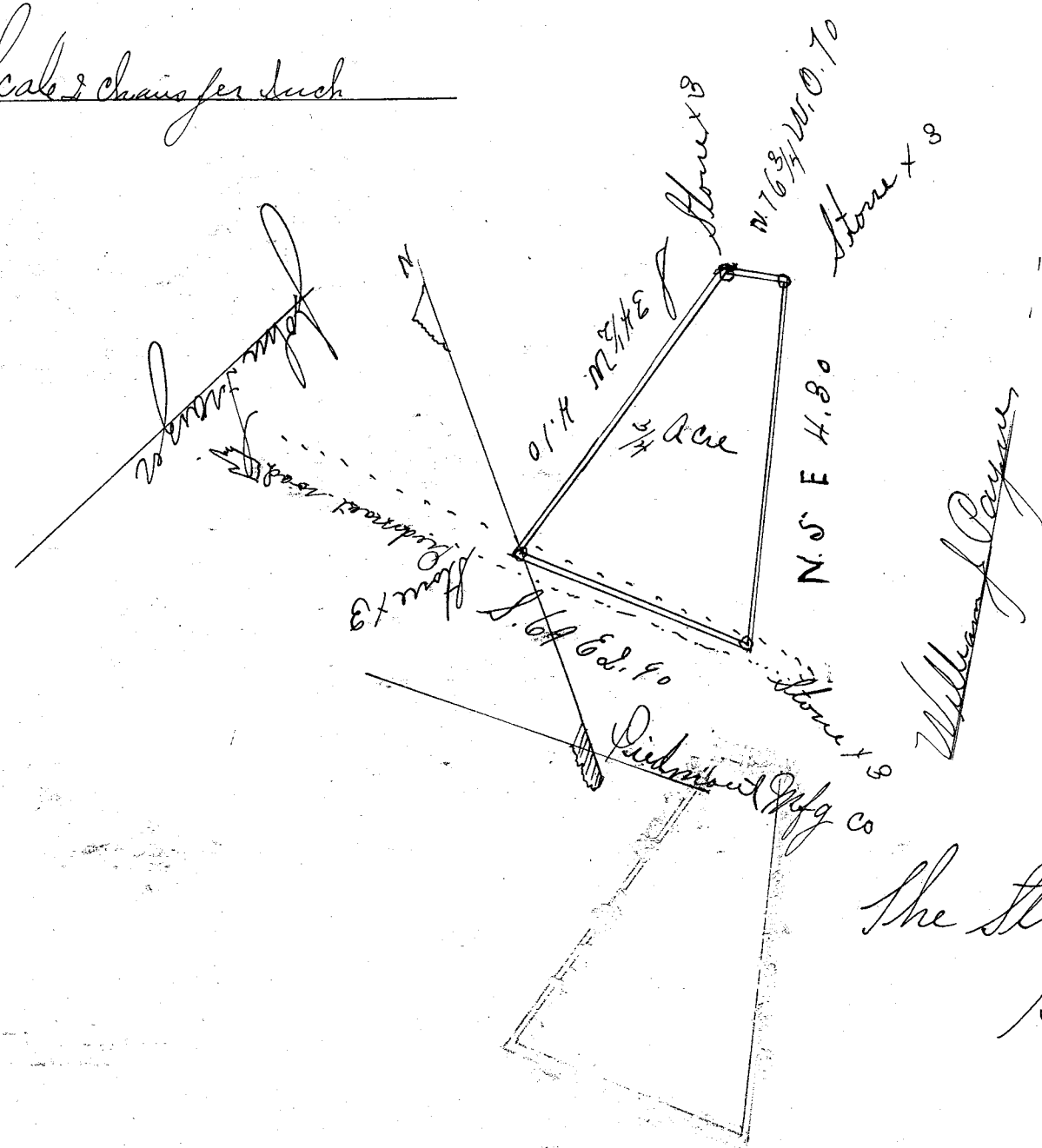


Scale 2 chains per inch



The State of South Carolina  
Greenville county

By request of John Leazer I have surveyed and laid out a certain lot of land for thos Leazer situate in Greenville county and state aforesaid lying on Piedmont road near the town of Piedmont and I find it to contain three fourths (3/4) of an acre having such forms markers and boundaries as are represented by the above plat surveyed June 6/899

Wm J Lee surveyor

" Copied on this book by John Gilbreath "